

OSCPA MEMBERSHIP REPORT

For the period ending December 31, 2017

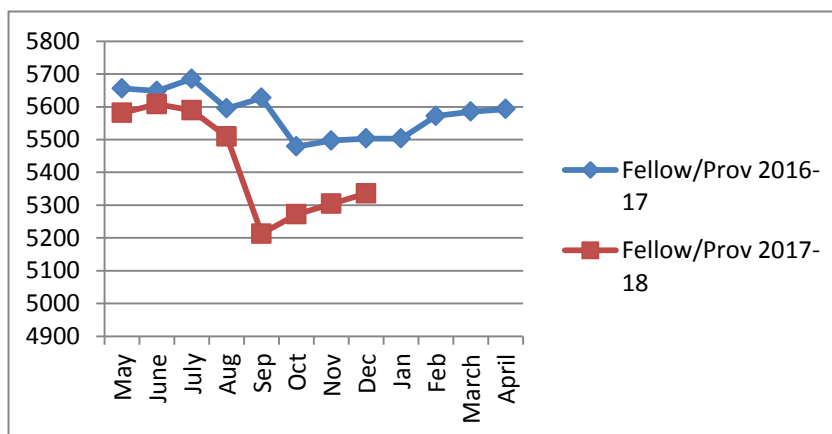
	Current Month	Year-to-Date
CPA Members		
Retained CPA Members	5257	5485
New CPA Members*	7	182
Reinstated CPA Members*	<u>7</u>	<u>55</u>
Increase in CPA Members	14	237
Resigned Fellow Members	0	155
Terminated Fellow Members	0	278
Deceased Fellow Members	<u>0</u>	<u>18</u>
Decrease in CPA Members	<u>(0)</u>	<u>(451)</u>
Total CPA Members	<u>5271</u>	<u>5271</u>
Provisional Members		
Retained Provisional Members	47	108
New Provisional Members*	21	46
Reinstated Provisional Members*	<u>0</u>	<u>0</u>
Increase in Provisional Members	21	46
Rolled to CPA Members	3	66
Resigned Provisional Members	0	6
Terminated Provisional Members	<u>0</u>	<u>17</u>
Decrease in Provisional Members	<u>(3)</u>	<u>(89)</u>
Total Provisional Members	<u>65</u>	<u>65</u>
CPA & Provisional Members	5336	5336
Associate Members*	205	205
Student Members*	<u>376</u>	<u>376</u>
Total OSCPAs Members	5917	5917

Members Employment	Pub Acct.	Industry	Gov't	Educ	Other**	Assoc.	Students	Total
Instate – No Permit	68	1026	92	64	427	195	363	2235
Instate – w/Permit	2062	836	59	50	147	0	0	3154
Out of State – No Permit	14	163	13	11	106	10	13	330
Out of State – w/ Permit	112	66	0	4	16	0	0	198
Total	2256	2091	164	129	696	205	376	5917

**Other – Members listed as retired, unemployed, student or unknown.

Chapter Information				
	CPAs/Prov	Pref. Chapter	Assoc.	Student
Ada	77	80	4	15
Eastern	125	10	5	21
Norman	372	66	11	40
N. Central	178	33	2	6
N.E.	110	20	3	11
N.W.	44	21	1	4
OKC	1831	99	91	109
Panhandle	23	15	0	2
Pott	74	17	3	9
S. Central	125	30	9	16
S.W.	157	37	9	46
Tulsa	1656	438	52	76
Western	57	51	4	9
Out of State	507	0	11	12
Total:	5336	917	205	376

Fellow/Provisional Yearly Membership Comparison



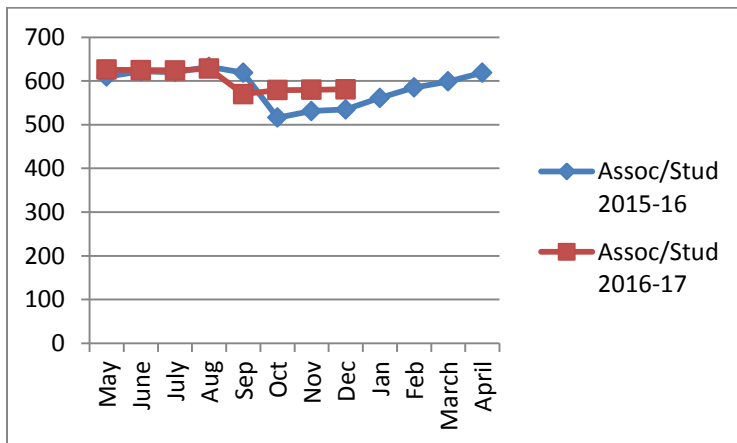
OSCPA MEMBERSHIP REPORT

For the period ending December 31, 2017

	<u>Current Month</u>	<u>Year-to-Date</u>
Associate Members		
Retained Associate Members	203	250
New Associate Members	2	28
Reinstated Associate Members	<u>0</u>	5
Increase in Associate Members	2	33
Rolled to CPA Members	0	11
Rolled to Provisional Members	0	2
Resigned Associate Members	0	3
Terminated Associate Members	<u>0</u>	62
Decrease in Associate Members	<u>(0)</u>	<u>(78)</u>
Total Associate Members	205	205

	<u>Current Month</u>	<u>Year-to-Date</u>
Student Members		
Retained Student Members	377	369
New Student Members	0	37
Reinstated Student Members	<u>0</u>	1
Increase in Student Members	0	38
Rolled to CPA Members	0	5
Rolled to Provisional Members	1	4
Rolled to Associate Members	0	5
Resigned Student Members	0	12
Terminated Student Members	<u>0</u>	5
Decrease in Student Members	<u>(1)</u>	<u>(31)</u>
Total Student Members	376	376

Associate/Student Yearly Membership Comparison



All New Member Sources:

- General Inquiry
- CPE
- Reinstatments

Reasons for Resignation/Termination:

- N/A