

OSCPA MEMBERSHIP REPORT

For the period ending January 31, 2018

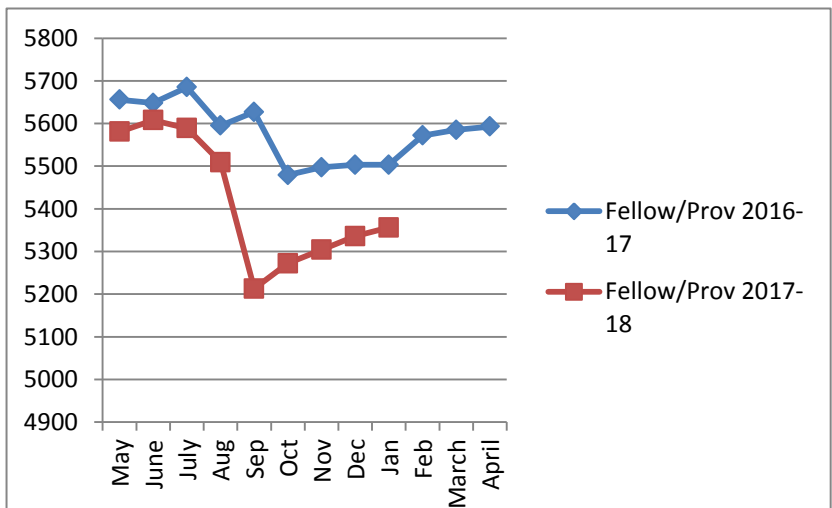
	Current Month	Year-to-Date
CPA Members		
Retained CPA Members	5271	5485
New CPA Members*	18	200
Reinstated CPA Members*	<u>8</u>	<u>63</u>
Increase in CPA Members	26	263
Resigned Fellow Members	0	155
Terminated Fellow Members	1	279
Deceased Fellow Members	<u>2</u>	<u>20</u>
Decrease in CPA Members	<u>(3)</u>	<u>(454)</u>
Total CPA Members	<u>5294</u>	<u>5294</u>
Provisional Members		
Retained Provisional Members	65	108
New Provisional Members*	0	46
Reinstated Provisional Members*	<u>0</u>	<u>0</u>
Increase in Provisional Members	0	46
Rolled to CPA Members	3	69
Resigned Provisional Members	0	6
Terminated Provisional Members	<u>0</u>	<u>17</u>
Decrease in Provisional Members	<u>(3)</u>	<u>(92)</u>
Total Provisional Members	<u>62</u>	<u>62</u>
CPA & Provisional Members	5356	5356
Associate Members*	205	205
Student Members*	<u>393</u>	<u>393</u>
Total OSCPAs Members	5954	5954

Members Employment	Pub Acct.	Industry	Gov't	Educ	Other**	Assoc.	Students	Total
Instate – No Permit	66	1028	93	63	432	194	380	2256
Instate – w/Permit	2069	838	59	50	150	0	0	3166
Out of State – No Permit	14	163	13	11	105	11	13	330
Out of State – w/ Permit	114	67	0	4	17	0	0	202
Total	2263	2096	165	128	704	205	393	5954

**Other – Members listed as retired, unemployed, student or unknown.

Chapter Information				
	CPAs/Prov	Pref. Chapter	Assoc.	Student
Ada	77	80	4	16
Eastern	126	10	5	21
Norman	372	66	12	40
N. Central	178	33	2	7
N.E.	111	20	3	12
N.W.	44	21	1	5
OKC	1838	99	89	110
Panhandle	23	15	0	2
Pott	74	17	3	9
S. Central	125	30	9	17
S.W.	158	37	10	51
Tulsa	1663	438	52	81
Western	57	51	4	10
Out of State	510	0	11	12
Total:	5356	917	205	393

Fellow/Provisional Yearly Membership Comparison

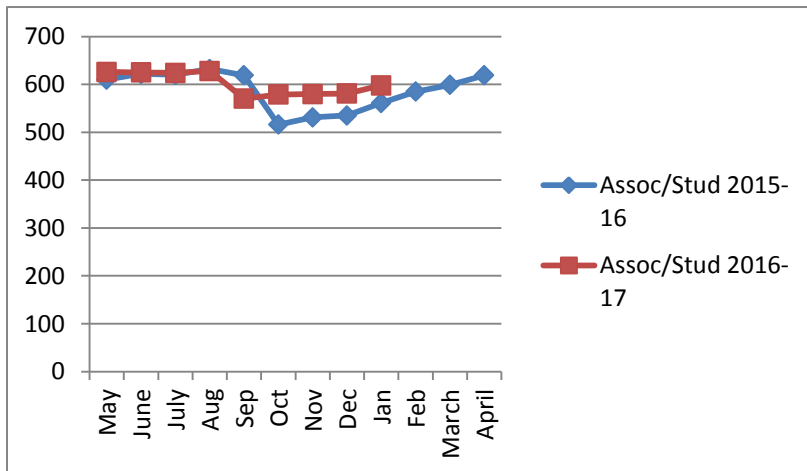


OSCPA MEMBERSHIP REPORT

For the period ending January 31, 2018

	<u>Current Month</u>	<u>Year-to-Date</u>
Associate Members		
Retained Associate Members	205	250
New Associate Members	2	30
Reinstated Associate Members	<u>1</u>	6
Increase in Associate Members	3	36
Rolled to CPA Members	3	114
Rolled to Provisional Members	0	2
Resigned Associate Members	0	3
Terminated Associate Members	<u>0</u>	62
Decrease in Associate Members	<u>(3)</u>	<u>(81)</u>
Total Associate Members	205	205
<hr/>		
	<u>Current Month</u>	<u>Year-to-Date</u>
Student Members		
Retained Student Members	376	369
New Student Members	18	55
Reinstated Student Members	<u>0</u>	1
Increase in Student Members	18	56
Rolled to CPA Members	1	6
Rolled to Provisional Members	0	4
Rolled to Associate Members	0	5
Resigned Student Members	0	12
Terminated Student Members	<u>0</u>	5
Decrease in Student Members	<u>(1)</u>	<u>(32)</u>
Total Student Members	393	393

Associate/Student Yearly Membership Comparison



All New Member Sources:

- General Inquiry
- Nonmember Campaign
- Reinstatements
- Student Career Nights

Reasons for Resignation/Termination:

- Deceased