

## OSCPA MEMBERSHIP REPORT

For the period ending April 30, 2018

	Current Month	Year-to-Date
<b>CPA Members</b>		
Retained CPA Members	5327	5485
New CPA Members*	33	269
Reinstated CPA Members*	<u>13</u>	<u>83</u>
Increase in CPA Members	46	352
Resigned Fellow Members	9	168
Terminated Fellow Members	0	282
Deceased Fellow Members	<u>1</u>	<u>24</u>
Decrease in CPA Members	<u>(10)</u>	<u>(474)</u>
Total CPA Members	<b><u>5363</u></b>	<b><u>5363</u></b>
<b>Provisional Members</b>		
Retained Provisional Members	113	108
New Provisional Members*	13	112
Reinstated Provisional Members*	<u>0</u>	<u>1</u>
Increase in Provisional Members	13	113
Rolled to CPA Members	16	88
Resigned Provisional Members	0	6
Terminated Provisional Members	<u>0</u>	<u>17</u>
Decrease in Provisional Members	<u>(16)</u>	<u>(111)</u>
Total Provisional Members	<b><u>110</u></b>	<b><u>110</u></b>
<b>CPA &amp; Provisional Members</b>	<b>5473</b>	<b>5473</b>
<b>Associate Members*</b>	221	221
<b>Student Members*</b>	<u>469</u>	<u>469</u>
Total OSCPAs Members	<b>6163</b>	<b>6163</b>

Members Employment	Pub Acct.	Industry	Gov't	Educ	Other**	Assoc.	Students	Total
Instate – No Permit	95	1049	102	64	455	210	453	2428
Instate – w/Permit	2076	853	58	50	162	0	0	3199
Out of State – No Permit	14	160	12	11	108	11	16	332
Out of State – w/ Permit	114	65	0	4	21	0	0	204
<b>Total</b>	<b>2299</b>	<b>2127</b>	<b>172</b>	<b>129</b>	<b>746</b>	<b>221</b>	<b>469</b>	<b>6163</b>

\*\*Other – Members listed as retired, unemployed, student or unknown.

Chapter Information					Fellow/Provisional Yearly Membership Comparison	
	CPAs/Prov	Pref. Chapter	Assoc.	Student		
Ada	81	80	4	20		
Eastern	127	10	5	22		
Norman	376	69	11	40		
N. Central	179	33	2	9		
N.E.	113	20	3	13		
N.W.	47	19	0	5		
OKC	1889	98	92	129		
Panhandle	23	15	0	2		
Pott	76	16	4	9		
S. Central	125	30	10	20		
S.W.	160	36	10	61		
Tulsa	1703	441	66	112		
Western	60	52	3	12		
Out of State	514	0	11	15		
<b>Total:</b>	<b>5473</b>	<b>919</b>	<b>221</b>	<b>469</b>		

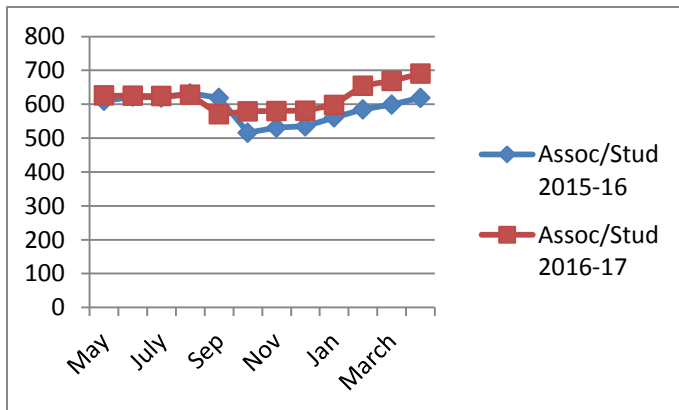
Month	Fellow/Prov 2016-17	Fellow/Prov 2017-18
May	5650	5550
June	5650	5600
July	5700	5600
Aug	5600	5500
Sep	5650	5200
Oct	5450	5250
Nov	5450	5300
Dec	5450	5350
Jan	5450	5350
Feb	5550	5400
March	5550	5450
April	5600	5450

## OSCPA MEMBERSHIP REPORT

For the period ending April 30, 2018

	<u>Current Month</u>	<u>Year-to-Date</u>
<b>Associate Members</b>		
Retained Associate Members	206	250
New Associate Members	24	63
Reinstated Associate Members	<u>0</u>	7
Increase in Associate Members	24	70
Rolled to CPA Members	2	17
Rolled to Provisional Members	6	14
Resigned Associate Members	0	5
Terminated Associate Members	<u>1</u>	63
Decrease in Associate Members	<u>(9)</u>	<u>(99)</u>
Total Associate Members	<b>221</b>	<b>221</b>
<hr/>		
<b>Student Members</b>		
Retained Student Members	463	369
New Student Members	8	140
Reinstated Student Members	<u>0</u>	<u>1</u>
Increase in Student Members	8	141
Rolled to CPA Members	0	6
Rolled to Provisional Members	2	10
Rolled to Associate Members	0	8
Resigned Student Members	0	12
Terminated Student Members	<u>0</u>	<u>5</u>
Decrease in Student Members	<u>(2)</u>	<u>(41)</u>
Total Student Members	<b>469</b>	<b>469</b>

### Associate/Student Yearly Membership Comparison



### All New Member Sources:

- General Inquiry
- Firm Billing Update
- Scholarships

### Reasons for Resignation/Termination:

- Deceased
- No longer eligible with OAB